

Installation

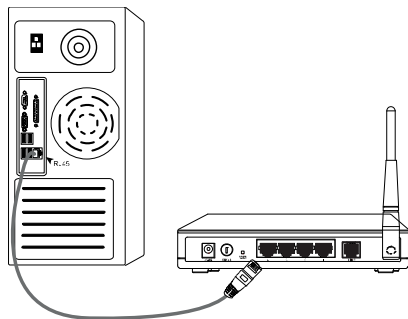
1

Connecting the device

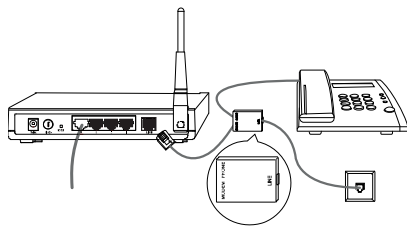
Note Please use only wired network connections to configure the router.

- 1 Power down all your network devices, including your computer(s) and the Modem Router. If you currently use a modem, disconnect it now - the Modem Router will replace your current modem.

- 2 Connect your computer to the Port labeled "1~4" on the Router with an Ethernet cable.

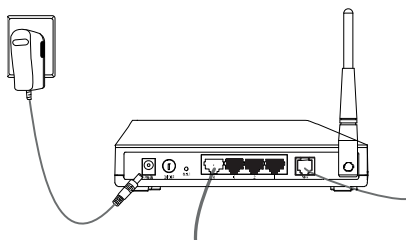


- 3 Connect the splitter to the wall jack using a telephone line, then use the other telephone line to directly connect it to the LINE port on the Router and the MODEM port of the splitter, also have the PHONE port of the splitter connected to a telephone.

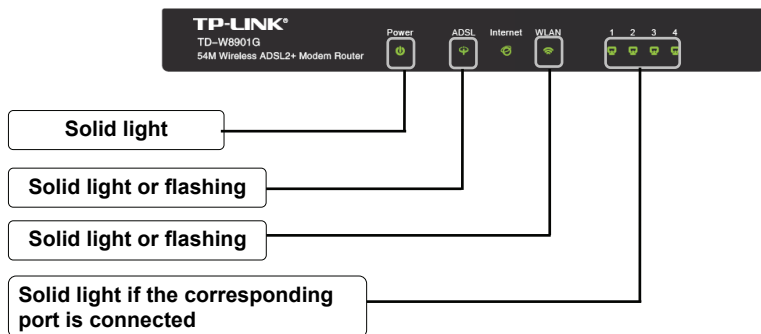


Note If no telephone is needed, please connect the LINE port of the Router to the wall jack using the telephone line directly.

- 4** Plug the provided Power Adapter into the Power jack on the back of the Router and the other end to a standard electrical wall socket.



- 5** Power on all your network devices and then check to see if the LEDs of the Router display normally as the diagram below describes.



Note If the LEDs display abnormally, please check to see if all the cable connectors (power adapter, phone line and Ethernet cable) are well connected to your device. With the phone line well connected, if the ADSL LED turns off after flashing, please contact your ISP to ensure that your internet connection is active.

2

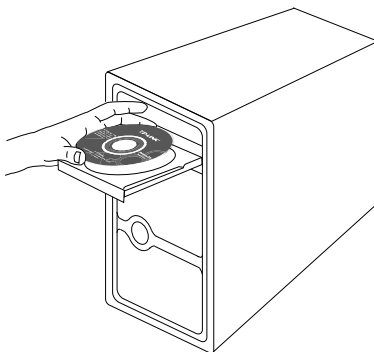
Configuring the device

Note To configure the device, you can either run the setup CD-ROM (method one), or run the Web based Quick Setup Wizard (method two). TP-LINK strongly recommends that you run the setup CD-ROM.

Method One :

Configuring the Device via the Resource CD

- 1** Insert the provided Resource CD into your CD-ROM drive.



- 2** The Setup Wizard will automatically pop up on your computer's screen.

Please select your product model and click **Start Setup**.



Then a flash video will pop up and show you how to connect your devices. After that, the **Easy Setup Assistant** will start.

Click **START**, and then follow the step-by-step instructions until you complete the configuration.



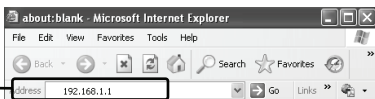
The configuration has now been completed. Please skip to **Step 3 "Testing the Internet Connection"**.

Method Two :

Configuring the device via the Web based Quick Setup Wizard

1 Login

Open your web browser and type in **192.168.1.1** in the address bar and press **Enter**.



A dialog box will prompt you for the **User name** and **Password**. Enter the default values and click **OK**.

User name: admin
Password: admin

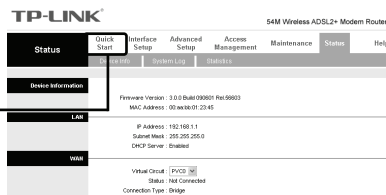


Click **OK**

Note If the dialog box does not pop up, please refer to **T3** in the **Troubleshooting** guide and **T2** will give you some help if you forget the password.

The web management page will display after a successful login.

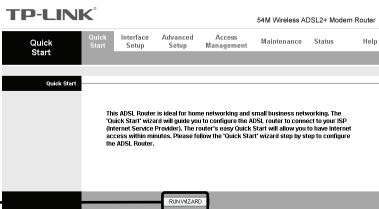
Click **Quick Start**



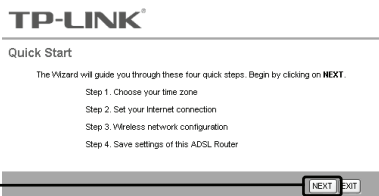
2 Internet Parameters Configuration

This page will then display.

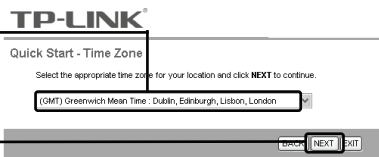
Click **RUNWIZARD**



Click **NEXT**



Select the appropriate **Time Zone** for your location from the drop-down list.



Click **NEXT**

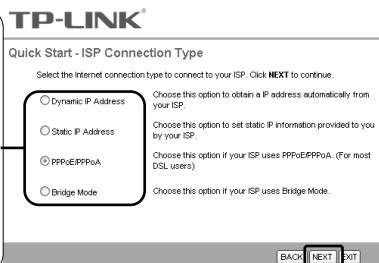
Choose the **Connection Type** given by your ISP.

If **PPPoE/PPPoA** is selected, please proceed to **A**;

If **Dynamic IP** is selected, please skip to **B**;

If **Static IP** is selected, please skip to **C**;

If **Bridge Mode** is selected, please skip to **D**.



Click **NEXT**

Note

Bridge mode is not recommended because multiple computers are not permitted to share Internet access in this mode.

A. Configuration For PPPoE/PPPoE

This page will then display.

Enter the **PPPoE/PPPoA** information provided by your ISP.

Click **NEXT**

TP-LINK

Quick Start - PPPoE/PPPoA

Enter the PPPoE/PPPoA information provided to you by your ISP. Click **NEXT** to continue.

Username:	<input type="text"/>
Password:	<input type="password"/>
VPI:	<input type="text" value="0"/> (0-255)
VCI:	<input type="text" value="33"/> (1-65535)
Connection Type:	<input type="text" value="PPPoE LLC"/>

Note If you did not get the **VPI**, **VCI** and **Connection Type** information, please contact your ISP for this information.

B. Configuration For Dynamic IP

This page will then display.

Select the **dynamic connection** provided by your ISP.

Click **NEXT**

TP-LINK

Quick Start - Dynamic IP

Please select the dynamic connection provided to you by your ISP. Click **Next** to continue.

VPI:	<input type="text" value="0"/> (0-255)
VCI:	<input type="text" value="33"/> (1-65535)
Connection Type:	<input type="text" value="1483 Bridged IP LLC"/>

C. Configuration For Static IP

This page will then display.

Enter the **Static IP** information provided by your ISP manually.

Click **NEXT**

TP-LINK

Quick Start - Static IP Address

Enter the static IP information provided to you by your ISP. Click **NEXT** to continue.

VPI:	<input type="text" value="0"/> (0-255)
VCI:	<input type="text" value="33"/> (1-65535)
IP Address:	<input type="text" value="0.0.0.0"/>
Subnet mask:	<input type="text"/>
ISP Gateway:	<input type="text" value="0.0.0.0"/>
Connection Type:	<input type="text" value="1483 Bridged IP LLC"/>

D. Configuration For Bridge Mode

This page will then display.

Enter the **Bridge** information provided by your ISP.

TP-LINK®

Quick Start - Bridge Mode

Enter the bridge information provided to you by your ISP. Click NEXT to continue.

VPI: 0 (0-255)
VCI: 33 (1-65535)
Connection Type: 1483 Bridged P.LLC

Click **NEXT**

BACK | **NEXT** | EXIT

After completing the above configuration, please proceed to **3 Wireless Settings Configuration**

3 Wireless Settings Configuration

This page will then display.

Keep the default setting: **Activated**. If you want to disable Access Point, please select **Deactivated**.

Create a unique and easy to remember name for your wireless network. You can also keep default settings without the device being affected.

Select an **Authentication Type**.

Select an **Encryption Type**.

Enter a Security Key using 8-64 characters.

Click **NEXT**

TP-LINK®

Quick Start - WLAN

You may enable/disable WLAN, change the WLAN SSID and Authentication type in this page.

Access Point: Activated Deactivated

SSID: TP-LINK_012345

Broadcast SSID: Yes No

Authentication Type: WPA2-PSK

Encryption: TKIP

Pre-Shared Key: 1234567890

8-64 characters

BACK | **NEXT** | EXIT

Note The wireless security is **Disabled** by default. You are suggested to select an **Authentication Type** for security settings. WPA2-PSK is recommended.

After completing the above configuration, please proceed to **4 Quick Start Complete**.

4 Quick Start Complete

To continue, the following page will be displayed.

TP-LINK

Quick Start Complete !!

The Setup Wizard has completed. Click on **BACK** to modify changes or mistakes. Click **NEXT** to save the current settings.

Click **NEXT**

BACK NEXT DOT

TP-LINK

Quick Start Completed !!

Saved Changes.

Click **CLOSE**

CLOSE

Now, your Modem Router has been configured and is rebooting. Please do not turn off the Modem Router while it's rebooting.

3 Testing the Internet Connection

The basic settings for your Router are completed. Please open the web browser and log on to the following websites:

<http://www.tp-link.com>

<http://www.google.com>

If the above websites can be accessed, it indicates that your Router has been configured successfully and you can start to enjoy the Internet. If the websites cannot be accessed, please refer to "**T4. What can I do if I cannot access the internet?**" in the **Troubleshooting** guide.

Note For the advanced configurations, please refer to the User Guide on the CD-ROM provided.

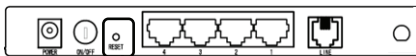
Note The above configurations only need to be set once. If you want other computers in your LAN to access the Internet, please connect the desired computer to the ADSL Router directly. If the additional computer can not access the Internet, please set that computer referring to "**T3. What can I do if I cannot access the web-based configuration page?**" in the **Troubleshooting** guide.



Troubleshooting

T1. How do I restore my Router's configuration to its factory default settings?

With the Router powered on, press and hold the **Reset** button on the rear panel for 8 to 10 seconds before releasing it.



Press it for 8 to 10 seconds

Note Once the Router is reset, the current configuration settings will be lost and you will need to re-configure the router.

T2. What can I do if I don't know or forgot my password?

- 1) Restore the Router's configuration to its factory default settings. If you don't know how to do that, please refer to section T1.
- 2) Use the default user name and password: **admin, admin**.
- 3) Try to configure your Router once again by following the instructions in the previous steps of the QIG.

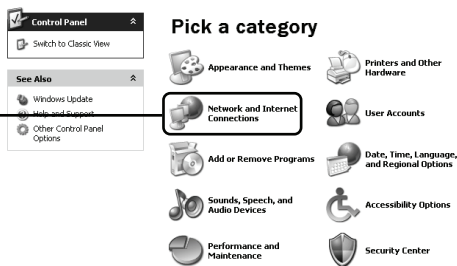
T3. What can I do if I cannot access the web-based configuration page?

- 1) Configure your computer's IP Address.

For Windows XP OS

Go to **Start > Control Panel**, you will then see the following page.

Click **Network and Internet Connections**





Network and Internet Connections

Pick a task...

- 1 Set up or change your Internet connection
- 2 Create a connection to the network at your workplace
- 3 Set up or change your home or small office network
- 4 Set up a wireless network for a home or small office
- 5 Change Windows Firewall settings

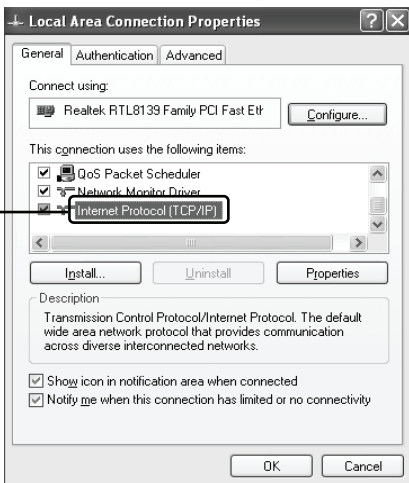
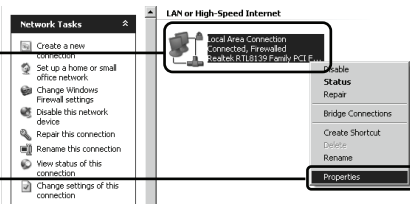
or pick a Control Panel icon



Click **Network Connections**

Right-click **Local Area Connection**

Click **Properties**

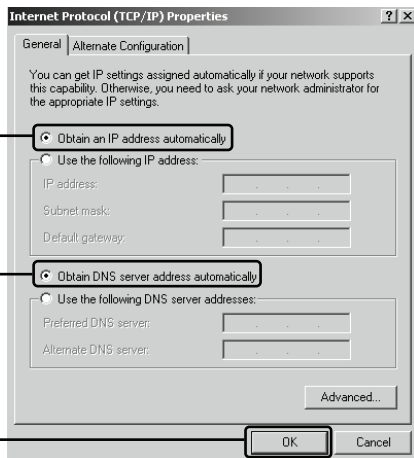


Double-click **Internet Protocol (TCP/IP)**

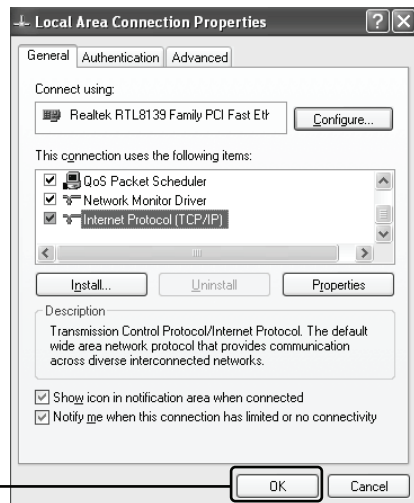
Select **Obtain an IP address automatically**

Select **Obtain DNS server address automatically**

Click **OK**



Click **OK**



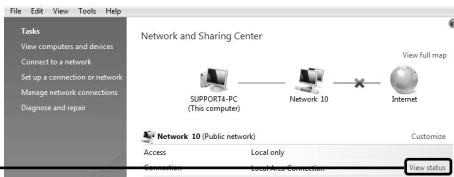
For Windows Vista OS

Go to **Start > Settings > Control Panel**, and then you will see the following page.

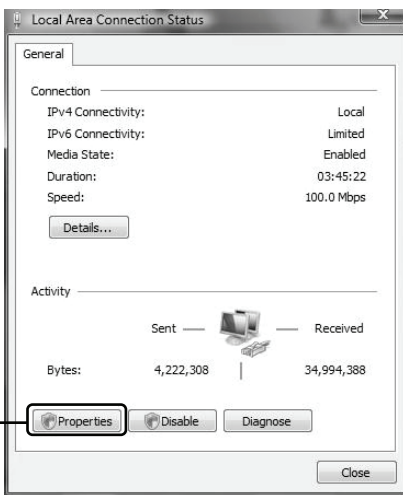
Click **View network status and tasks**



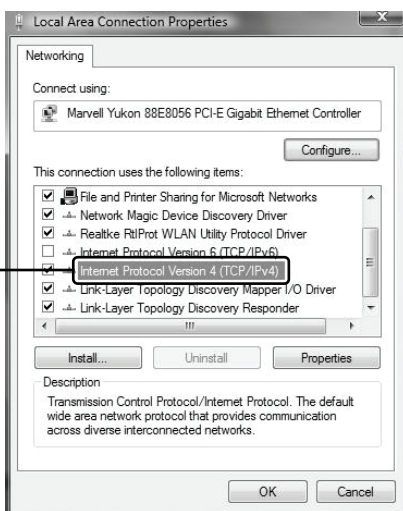
Click **View status**



Click **Properties**



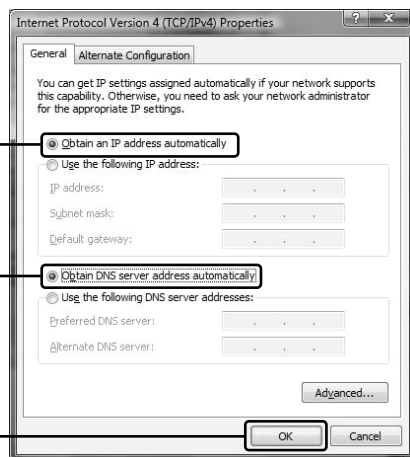
Double-click **Internet Protocol Version 4 (TCP/IPv4)**.



Select **Obtain an IP address automatically**

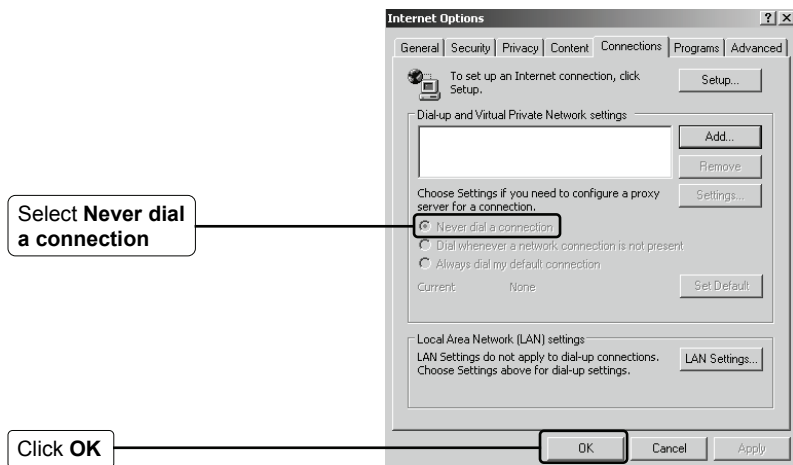
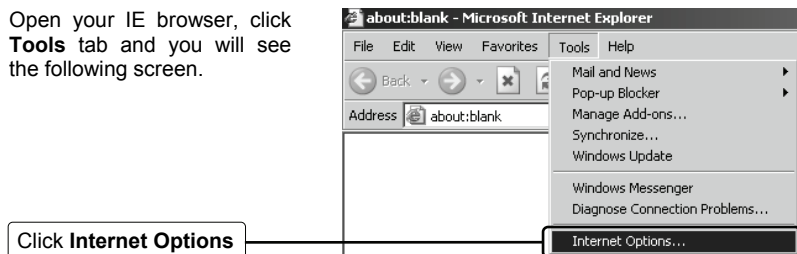
Select **Obtain DNS server address automatically**

Click **OK**



2) Configure your IE browser

Open your IE browser, click **Tools** tab and you will see the following screen.



Now, try to log on to the Web-based configuration page again after the above settings have been configured. If you still cannot access the configuration page, please restore your Router's factory default settings and reconfigure your Router following the instructions of this QIG. Please feel free to contact our Technical Support if the problem persists.

T4. What can I do if I cannot access the internet?

- 1) Check to see if all the connectors are connected well, including the telephone line, Ethernet cables and power adapter.
- 2) Consult your ISP and make sure all the VPI/VCI, Connection Type, account

username and password are correct. If there are any mistakes, please correct the settings and try again.

- 3) If you still cannot access the Internet, please restore your Router to its factory default settings and reconfigure your Router by following the instructions of this QIG.
- 4) Please feel free to contact our Technical Support if the problem still exists.

Note For more details about Troubleshooting and Technical Support contact information, please log on to our Technical Support Website:
<http://www.tp-link.com/support/Support.asp>

Technical Support

- For more troubleshooting help, go to www.tp-link.com/support/faq.asp
- To download the latest Firmware, Driver, Utility and User Guide, go to www.tp-link.com/support/download.asp
- For all other technical support, please contact us by using the following:

Global

Tel: +86 755 26504400

E-mail : support@tp-link.com

Service time: 24hrs, 7days a week

USA/Canada

Toll Free: +1 866 225 8139

E-mail: support.usa@tp-link.com

Service time: 24hrs, 7days a week

Australia & New Zealand

Tel: AU 1300 87 5465

NZ 0800 87 5465

E-mail: support@tp-link.com.au

Service time: Monday to Friday

9:00 AM to 9:00 PM AEST

Singapore

Tel: +65 62840493

E-mail: support.sg@tp-link.com

Service time: 24hrs, 7days a week